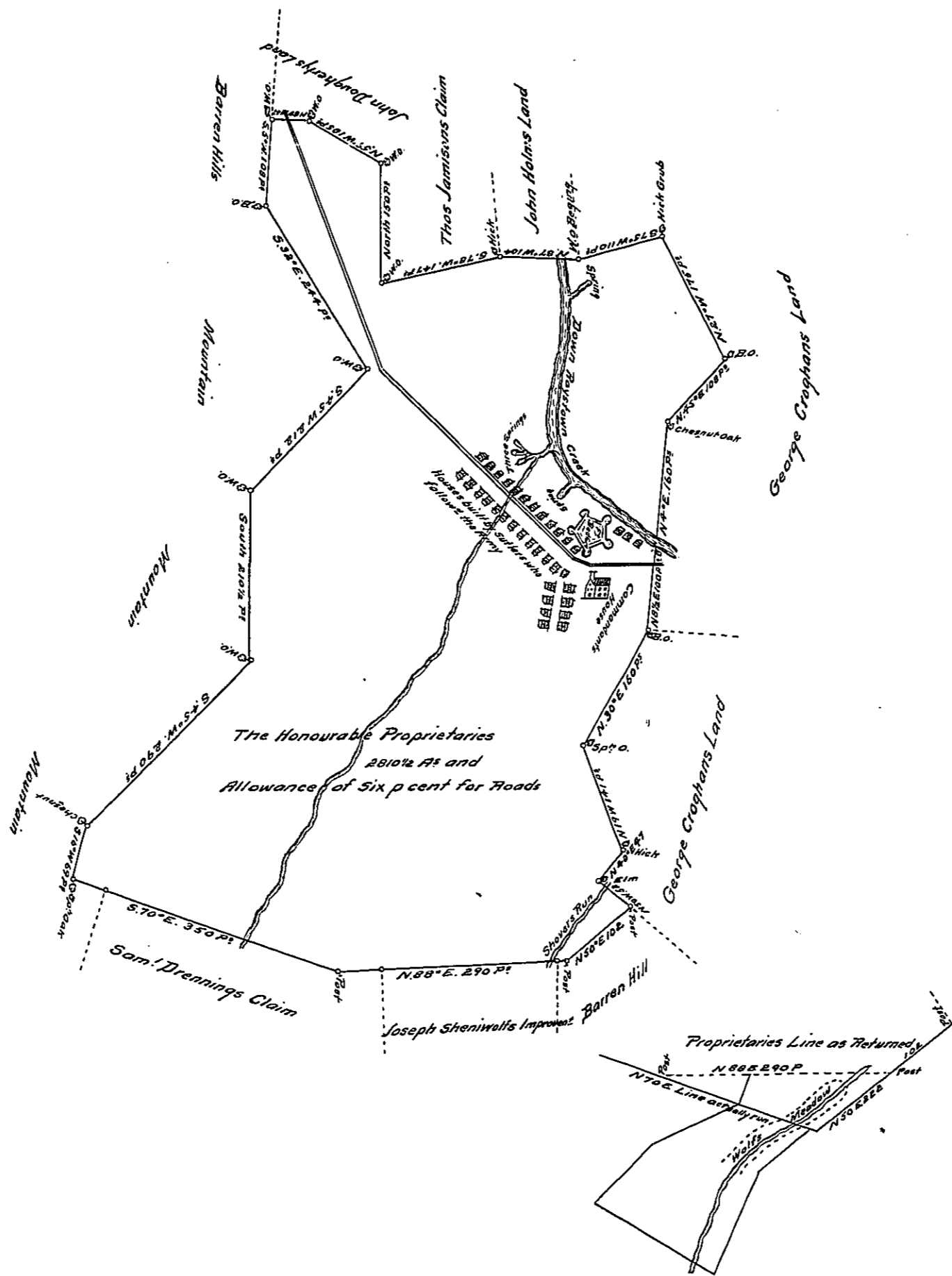


(Endorsement on back)
 Cumberland County
 The Hon^{ble} Prop^{rs} 2810th A^s
 Returned pc 9th Aug^t 1762
 Copy sent y^r Proprietaries
 & also to y^r Secretary

20



A Draught of a tract of Land, situate at Bedford, in the County of Cumberland, Containing Two thousand eight hundred & ten acres and an half of an acre with the usual allowance of Six P. cent for roads. Surveyed for the Honourable the Proprietaries the 29th day of October 1761, in pursuance of a Warrant bearing date the twenty fifth day of November One thousand seven hundred & forty eight 1748

To John Lutrens }
 Surveyor Genl }

By John Armstrong D.S.

In Testimony, That the above is a copy of the original, remaining on file in the Department of Internal Affairs of Pennsylvania, made conformably to an Act of Assembly, approved the 16th day of February, A.D. 1833, I have hereunto set my hand and caused the Seal of the said Department to be affixed, at Harrisburg, this seventh day of May A.D. 1912.

Henry Houck,
 Secretary of Internal Affairs.